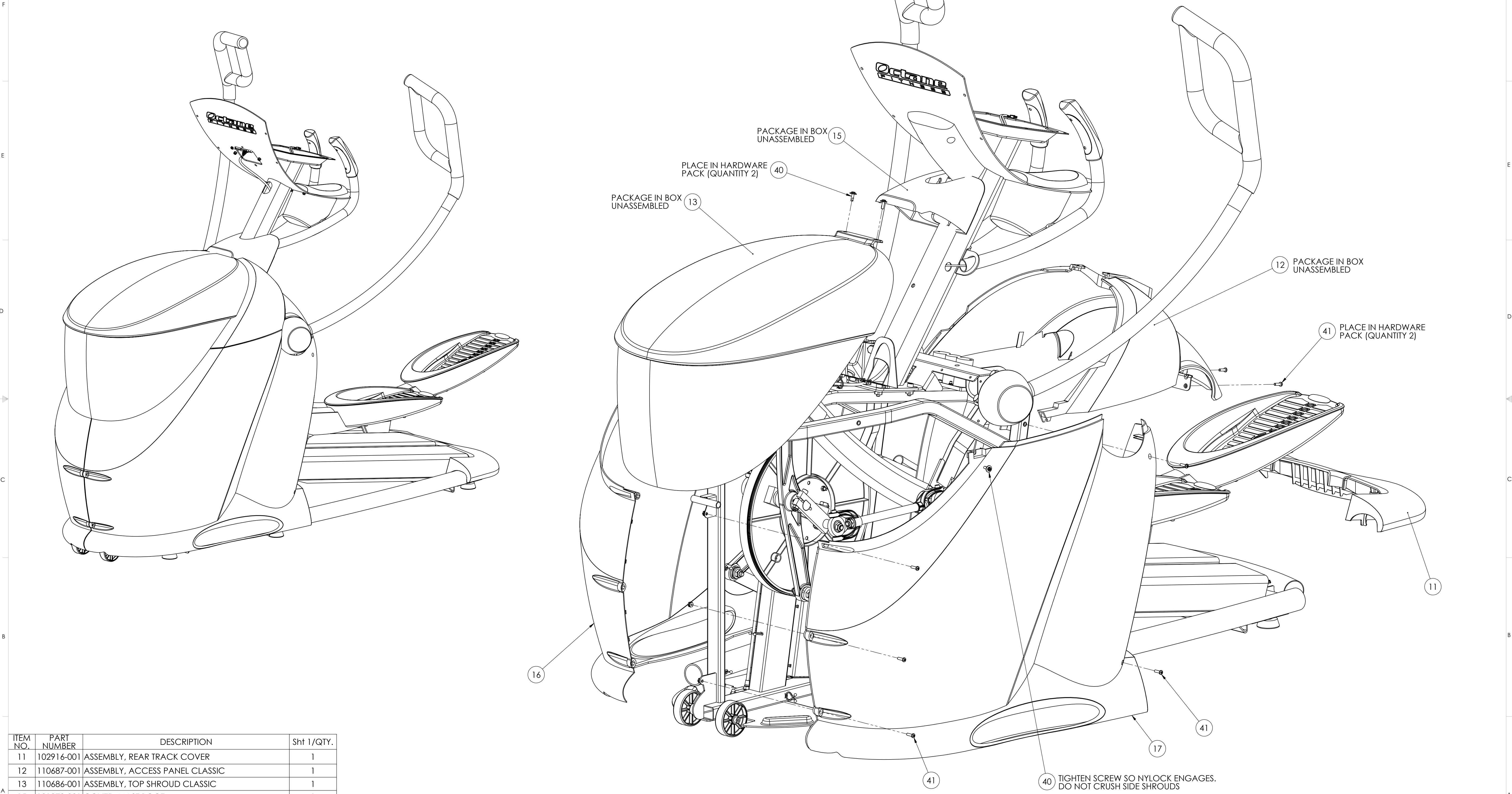


THE INFORMATION CONTAINED IN THIS DRAWING IS THE SOLE PROPERTY OF OCTANE FITNESS. ANY REPRODUCTION IN PART OR WHOLE WITHOUT THE WRITTEN PERMISSION OF OCTANE FITNESS IS PROHIBITED.

REV	DESCRIPTION	ECN #	DATE	ENG
D	MOVE WARNING LABEL TO SUBASY	001-00-015659	11/16/2015	RAH
E	BOM SCRUB	001-00-015659	12/9/2015	RAH
F	UPDATED MAST (ITEM 18) TO MAKE COMPATIBLE WITH FIT KIT	001-00-015791	4/17/2017	BHG
G	SHEET 3: ADDED PHOTO AND NOTE FOR PEDAL TO TRACK ALIGNMENT	001-00-015892	8/1/2017	BHG
K	UPDATED VIEWS TO SHOW CHANGES TO ITEM 1; REV JUMPED FROM G TO K TO MATCH ITEM REV.	ECO-002854	7/26/2018	MRN



ITEM NO.	PART NUMBER	DESCRIPTION	Sht 1/QTY.
11	102916-001	ASSEMBLY, REAR TRACK COVER	1
12	110687-001	ASSEMBLY, ACCESS PANEL CLASSIC	1
13	110686-001	ASSEMBLY, TOP SHROUD CLASSIC	1
15	101870-001	COVER, MAST BOOT	1
16	101863-001	SHROUD, RIGHT	1
17	101864-001	SHROUD, LEFT	1
40	102306-001	SCREW, M5 X 0.8 X 18, PAN HEAD, TYPE 1, CROSS RECESSED, BZ, FLAT WASHER	4
41	102134-001	SCREW, M5 X 0.8 X 18, PAN HEAD, TYPE 1 CROSS RECESSED, SS	9

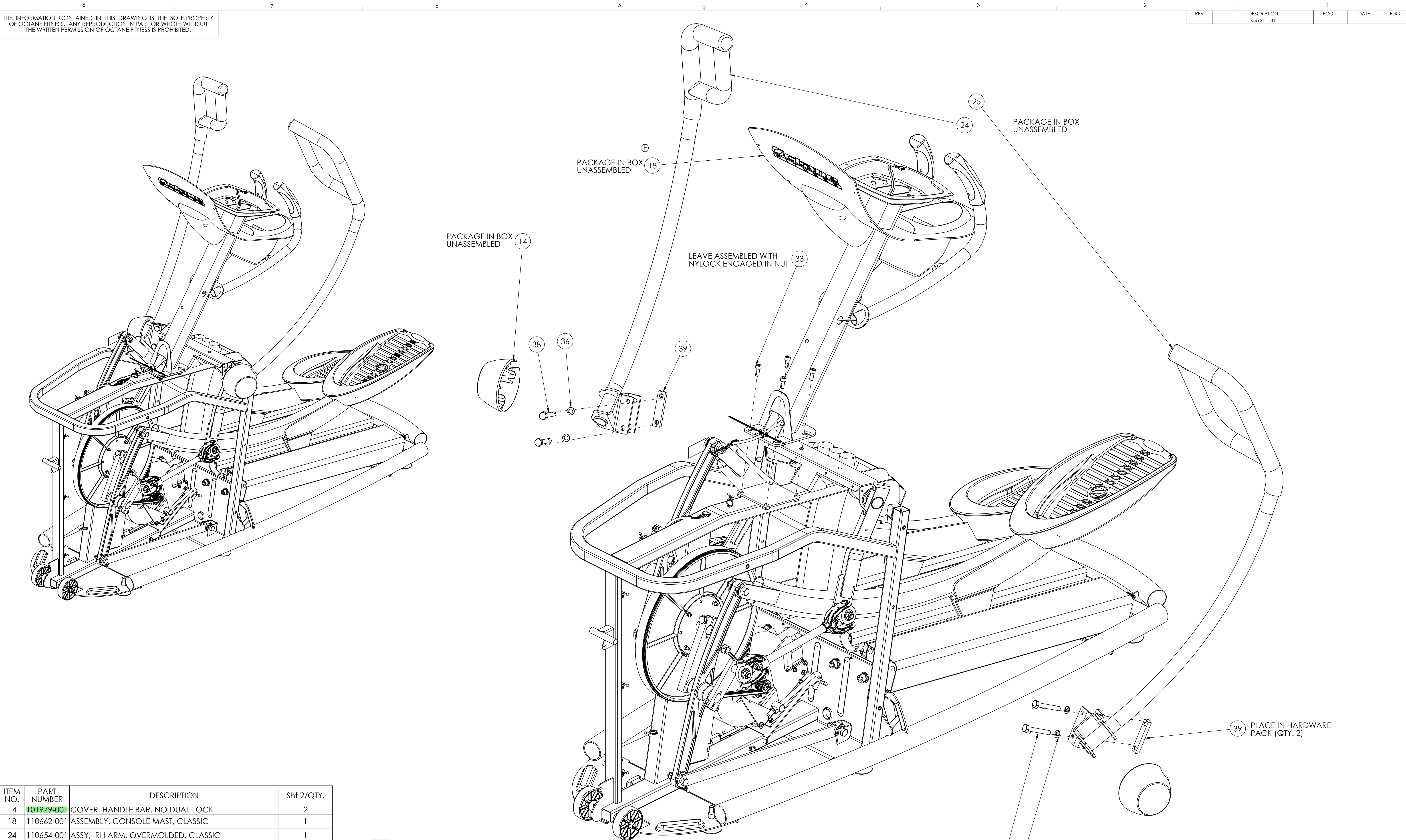
NOTES:

1. OCTANE FITNESS ENGINEERING APPROVAL ON FIRST SAMPLES AND VENDOR INSPECTION REPORT REQUIRED PRIOR TO PRODUCTION FROM NEW OR REVISED TOOLING.

APPLICABLE OCTANE FITNESS SPECIFICATIONS	
SPEC NO.	SPECIFICATION TITLE
OFS-001	BELT TENSION REQUIREMENTS

UNLESS OTHERWISE SPECIFIED, DIMENSIONS ARE IN MILLIMETERS. TOLERANCES ARE: FRACTIONS DECIMALS ANGLES + X ±0.5 XX ±0.2 XXX ±0.1		CAD GENERATED DRAWING. DO NOT MANUALLY UPDATE.		OCTANE FITNESS <i>Fuel Your Life</i>	
APPROVALS		DATE		DESCRIPTION	
DRAWN		5/29/2007		BASE, PRO3700 CLASSIC	
CHECKED		XX-XX-XX			
RES'D ENG		XX-XX-XX			
MATERIAL		XX-XX-XX			
FINISH		XX-XX-XX			
DO NOT SCALE DRAWING		QUAL ENG		XX-XX-XX	
		SCALE 1:1		CAD FILE:	
		DWG. NO. 110700-001		REV. K	
				SHEET 1 OF 6	

8		7		6		5		4		3		2		1				
THE INFORMATION CONTAINED IN THIS DRAWING IS THE SOLE PROPERTY OF CH2M HILL. IT IS TO BE USED ONLY FOR THE PROJECT AND PURPOSE SPECIFIED HEREIN.														REV	DESCRIPTION	ECO #	DATE	ENG
														-	See Sheet1	-	-	-

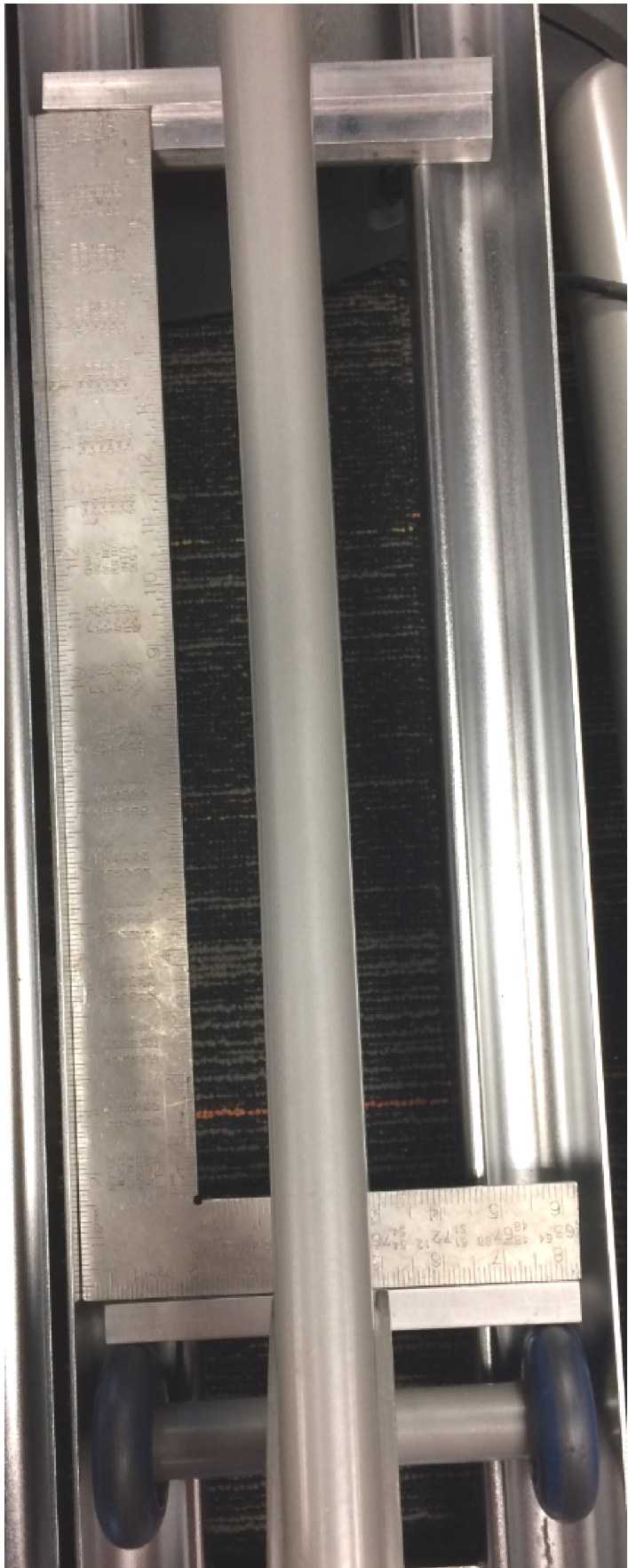


ITEM NO.	PART NUMBER	DESCRIPTION	Sht 2/QTY.
14	101979-001	COVER, HANDLE BAR, NO DUAL LOCK	2
18	110662-001	ASSEMBLY, CONSOLE MAST, CLASSIC	1
24	110654-001	ASSY, RH ARM, OVERMOLDED, CLASSIC	1
25	110655-001	ASSY, LH ARM, OVERMOLDED, CLASSIC	1
33	101295-001	SCREW, M8 X 1.25 X 20.0L SHCS, BLACK ZINC, 12.9 STL	4
36	950052-009	B18.21.2M, WASHER, LOCK, STL, M10	8
38	105606-001	BOLT, M10 X 1.5 X 65, HEX HEAD, GR 8.8, CZ	4
39	105605-001	BAR, ARM, M10 HOLES	2

NOTES:

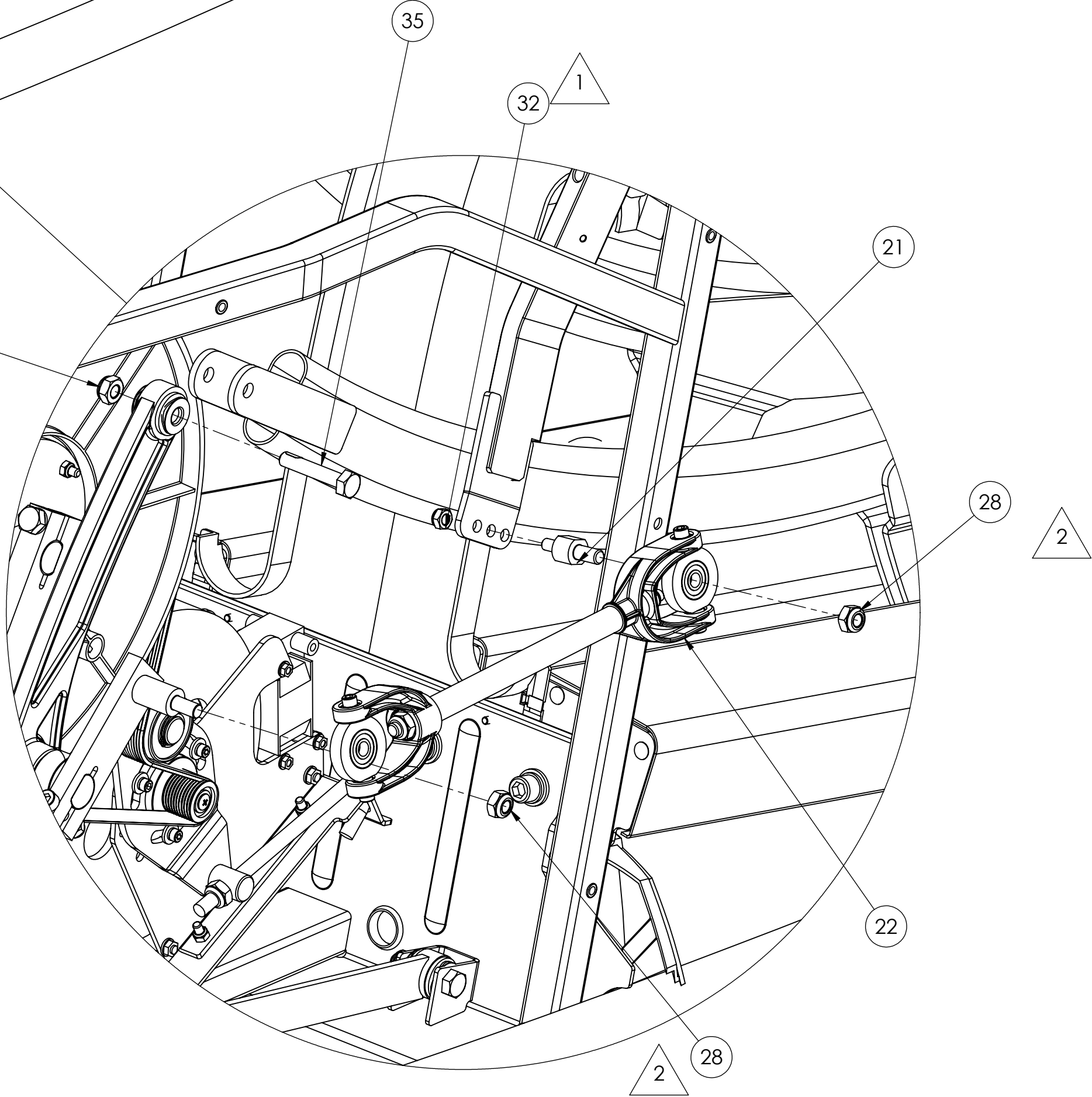
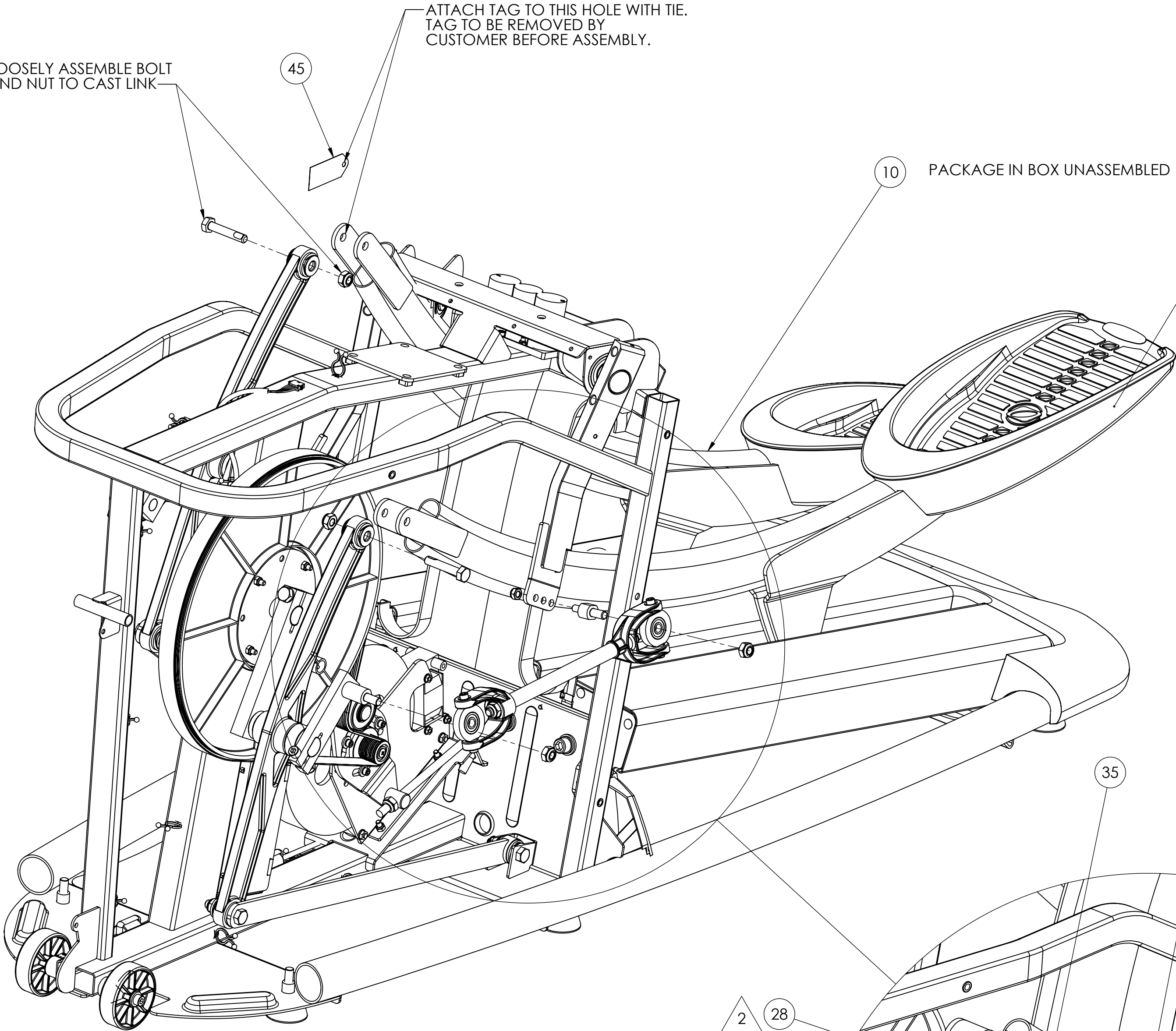
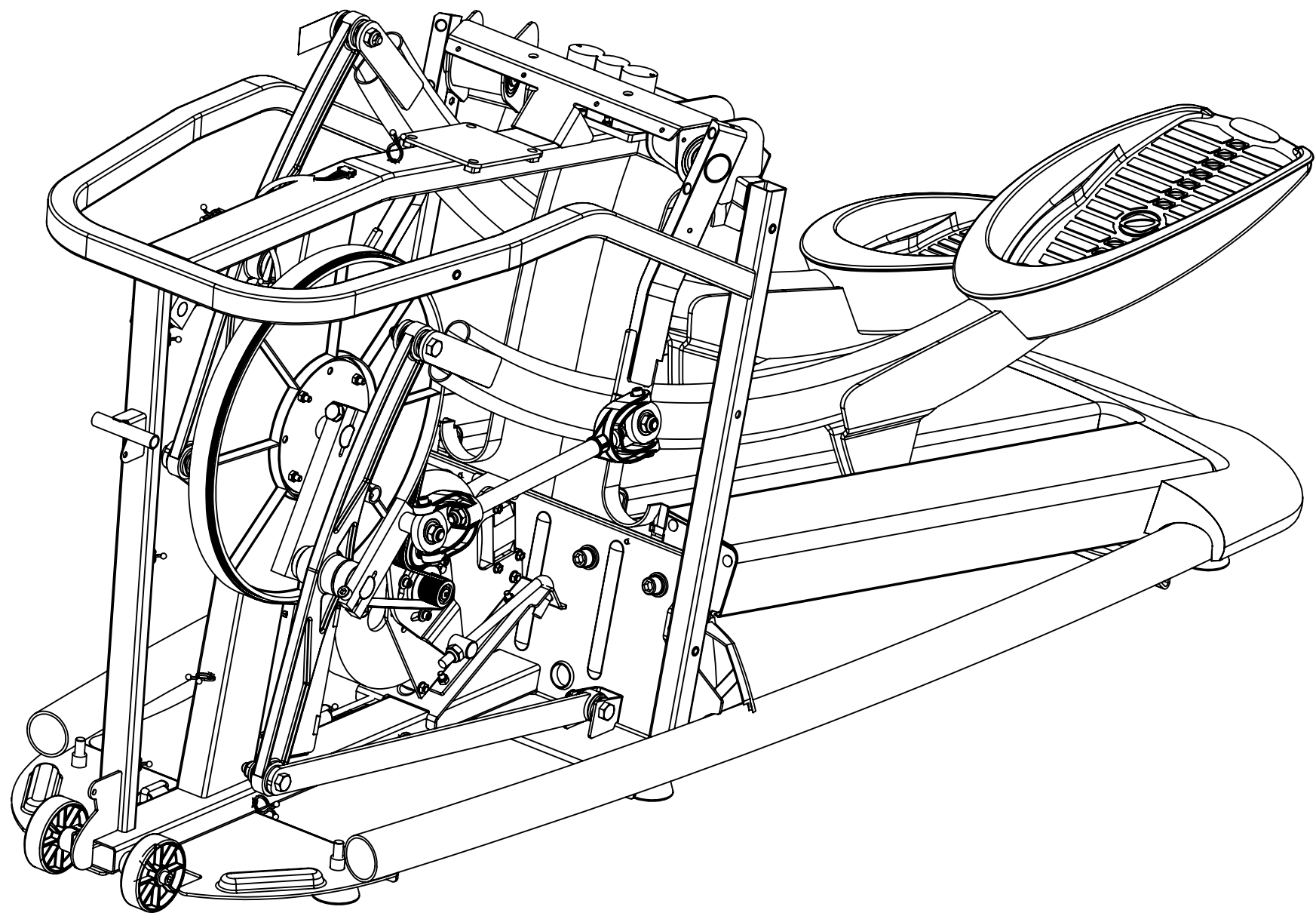
1. TORQUE FASTENER TO 23 N-M (17 FT-LB)
2. TORQUE FASTENER TO 45 N-M (33 FT-LB)
3. TORQUE FASTENER TO 75-80 N-M (55-60 FT-LB)

UNLESS OTHERWISE SPECIFIED DIMENSIONS ARE IN MILLIMETERS TOLERANCES ARE: FRACTIONS DECIMALS ANGLES		CAD GENERATED DRAWING: DO NOT MANUALLY UPDATE		<u>OCTANE FITNESS</u> <i>Fuel Your Life</i>	
APPROVALS DATE		DESCRIPTION			
DRAWN --- 5/29/2007		BASE, PRO3700 CLASSIC			
CHECKED --- XX-XX-XX					
RESP ENG --- XX-XX-XX					
MATERIAL ---					
SEE NOTES					
FINISH ---					
SEE NOTES					
DO NOT SCALE DRAWING		SIZE, HO. D.		110700-001	
QUAL ENG ---		SCALE 1:1		CAD FILE: _____	
				SHEET 2 OF 6	



USE SQUARE TO ALIGN TRACKS AND PEDALS PER OCTANE INSTRUCTIONS

**** WITH NO LOAD APPLIED TO THE PEDALS, ALL 4 ROLLER WHEELS MUST CONTACT THE TRACKS THROUGH FULL ROTATION OF THE MAIN AXLE .**



DETAIL A
SCALE 1 : 3

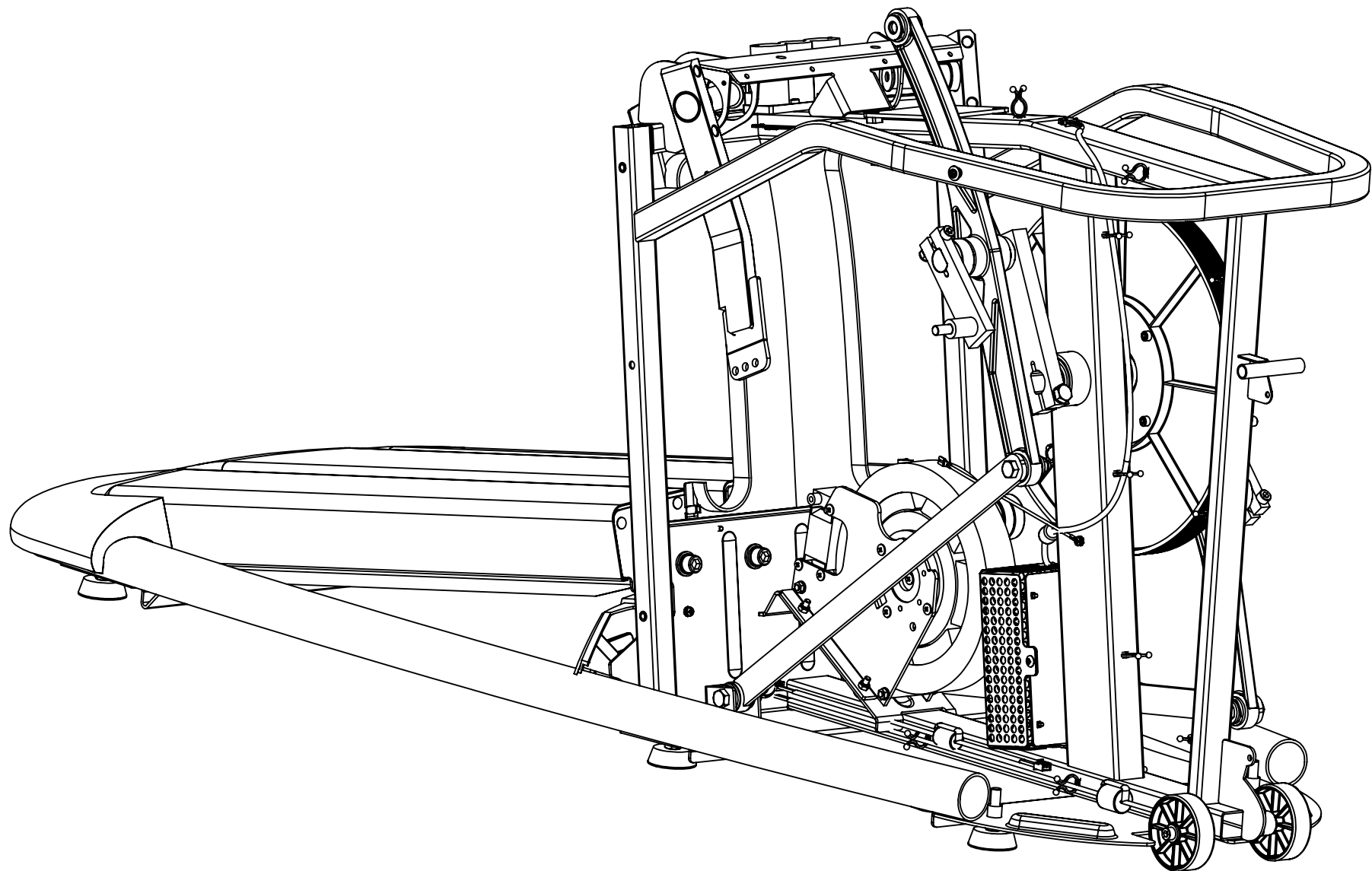
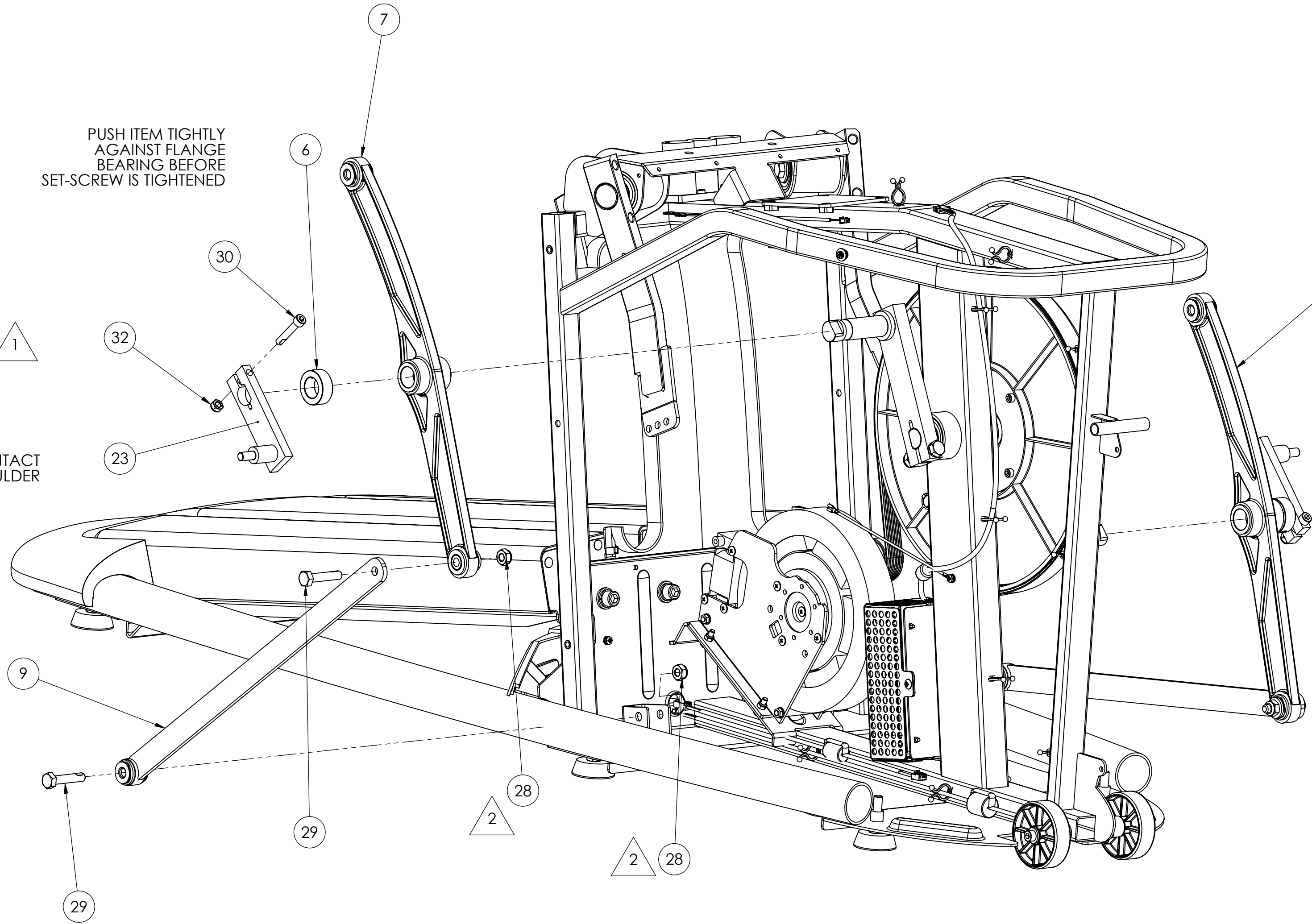
ITEM NO.	PART NUMBER	DESCRIPTION	Sht 3/QTY.
10	110659-001	ASSY, BRACED PEDAL LEVER, CLASSIC	2
21	102498-001	SHAFT, ROCKER	2
22	102710-001	ASSEMBLY, MULTI-AXIS BEARING LINK, PLASTIC	2
28	950046-009	NUT, HEX, NYLON INSERT, STL, M10	10
32	103393-001	NUT, HEX, NYLON INSERT, M8 X 1.25, CZ CLASS 10	4
35	100715-001	BOLT, M10 X 1.5 X 55, HEX HEAD, 12.9 STL, CZ	4
45	102286-001	TAG, TIGHTEN SECURELY	1

NOTES:

- 1. TORQUE FASTENER TO 23 N-M (17 FT-LB)
- 2. TORQUE FASTENER TO 45 N-M (33 FT-LB)
- 3. TORQUE FASTENER TO 75-80 N-M (55-60 FT-LB)

THE INFORMATION CONTAINED IN THIS DRAWING IS THE SOLE PROPERTY OF OCTANE FITNESS. ANY REPRODUCTION IN PART OR WHOLE WITHOUT THE WRITTEN PERMISSION OF OCTANE FITNESS IS PROHIBITED.

REV	DESCRIPTION	ECO #	DATE	ENG
-	See Sheet1	-	-	-



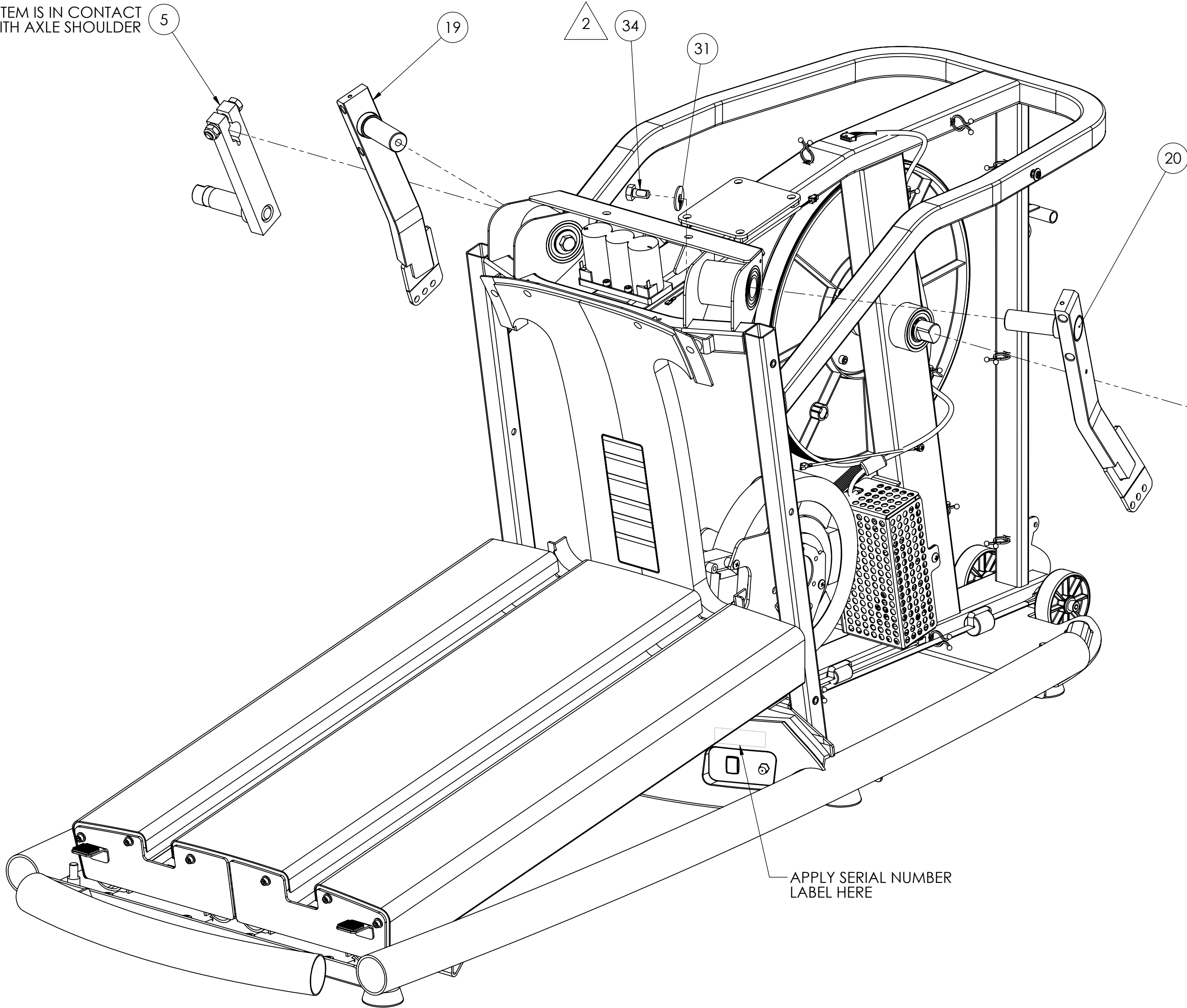
ITEM NO.	PART NUMBER	DESCRIPTION	Sh† 4/QTY.
6	102074-001	COLLAR, LOCKING, SET SCREW, 25MM	2
7	110669-001	ASSEMBLY, CAST 3P LINK, RH CLASSIC	1
8	110670-001	ASSEMBLY, CAST 3P LINK, LH CLASSIC	1
9	105150-001	ASSEMBLY, LINK, STABILIZER	2
23	102042-001	WELDMENT, OFFSET CRANK, PRO	2
28	950046-009	NUT, HEX, NYLON INSERT, STL, M10	10
29	101561-001	BOLT, M10 X 1.5 X 50, HEX HEAD, GR 8.8, CZ	4
30	101296-001	SCREW, M8 X 1.25 X 45.0L SHCS, BLACK ZINC, 12.9 STL	2
32	103393-001	NUT, HEX, NYLON INSERT, M8 X 1.25, CZ CLASS 10	4

NOTES:

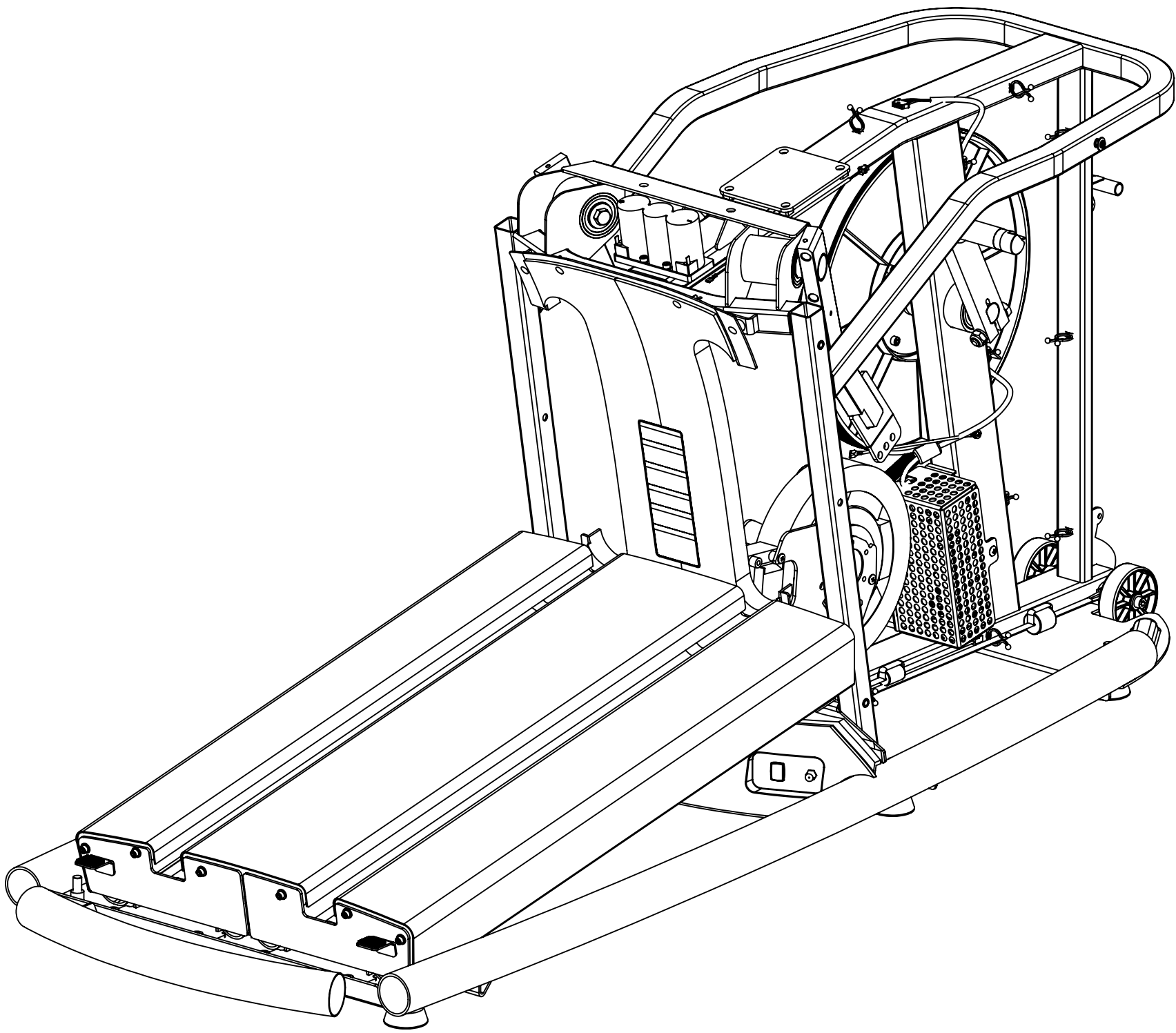
- TORQUE FASTENER TO 23 N-M (17 FT-LB)
- TORQUE FASTENER TO 45 N-M (33 FT-LB)
- TORQUE FASTENER TO 75-80 N-M (55-60 FT-LB)

UNLESS OTHERWISE SPECIFIED, DIMENSIONS ARE IN MILLIMETERS. TOLERANCES ARE: FRACTIONS DECIMALS ANGLES		CAD GENERATED DRAWING. DO NOT MANUALLY UPDATE.		OCTANE FITNESS <i>Fuel Your Life</i>	
MATERIAL	SEE NOTES	CHECKED	DATE	DESCRIPTION	REV
FINISH	SEE NOTES	RESF ENG	5/29/2007	BASE, PRO3700 CLASSIC	K
DO NOT SCALE DRAWING	QUAL ENG	XX-XX-XX	XX-XX-XX	110700-001	1

ENSURE ITEM IS IN CONTACT WITH AXLE SHOULDER



ENSURE ITEM IS IN CONTACT WITH AXLE SHOULDER



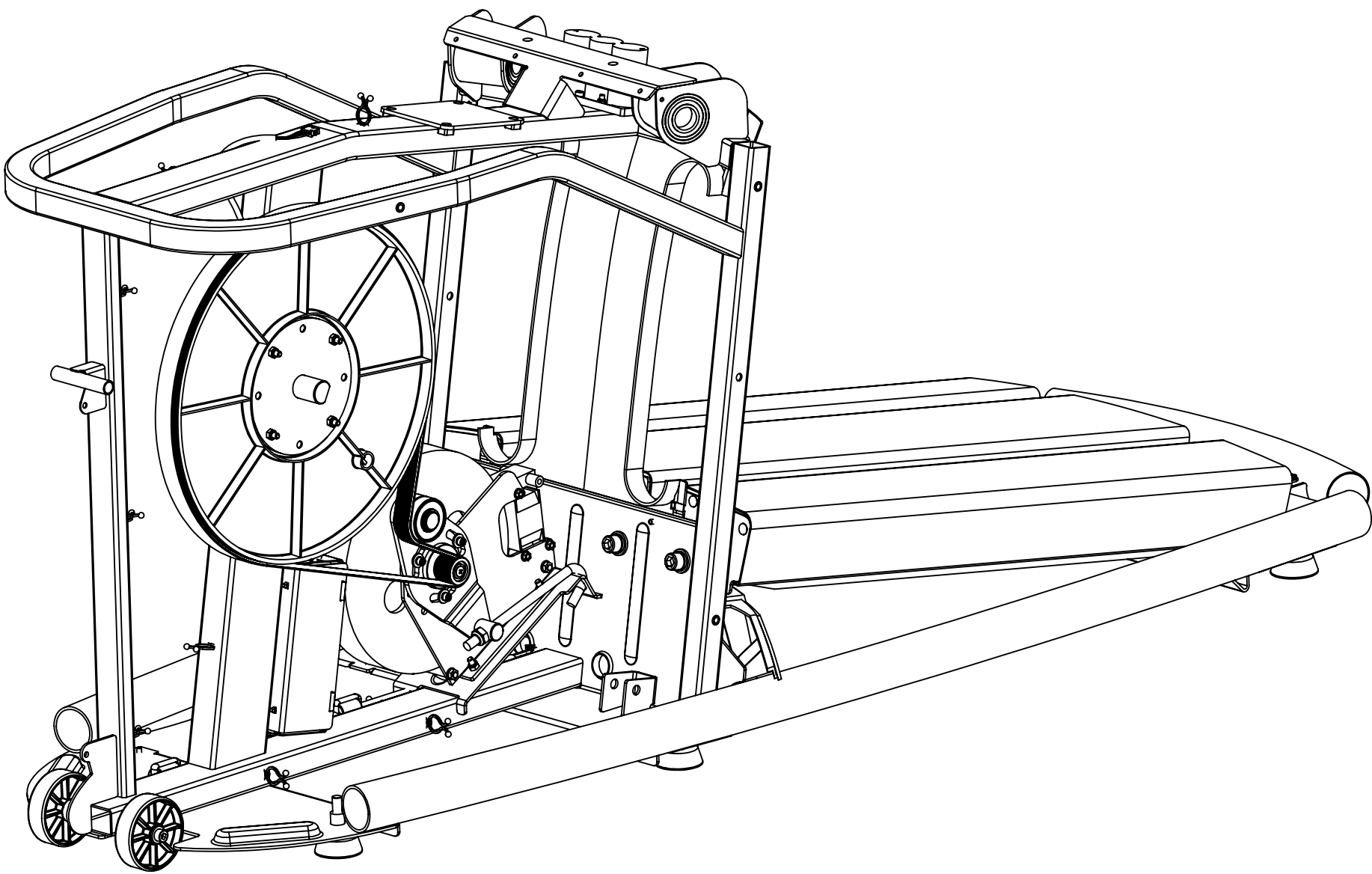
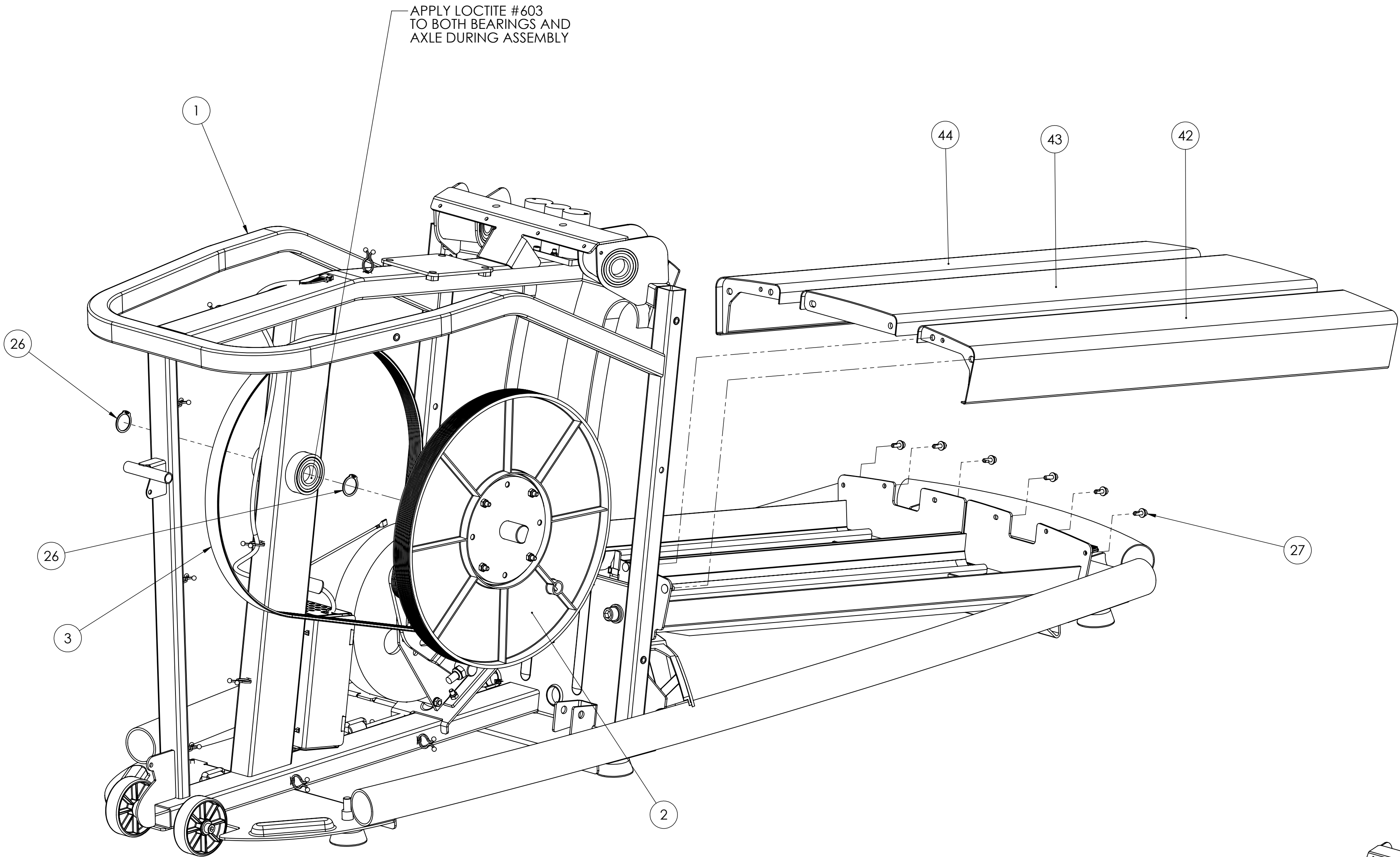
ITEM NO.	PART NUMBER	DESCRIPTION	Sht 5/QTY.
4	102047-001	WELDMENT, RIGHT CRANK ARM	1
5	102048-001	WELDMENT, LEFT CRANK ARM	1
19	105199-001	WLDMT, LEFT COMM ROCKER	1
20	105197-001	WLDMT, RIGHT COMM ROCKER	1
28	950046-009	NUT, HEX, NYLON INSERT, STL, M10	10
29	101561-001	BOLT, M10 X 1.5 X 50, HEX HEAD, GR 8.8, CZ	4
31	101720-001	WASHER, 10 X 30 X 2, STEEL, CZ	2
34	100716-001	BOLT, M10 X 1.5 X 20, HEX HEAD, GR 8.8, CZ	2
35	100715-001	BOLT, M10 X 1.5 X 55, HEX HEAD, 12.9 STL, CZ	4
36	950052-009	B18.21.2M, WASHER, LOCK, STL, M10	8
37	103395-001	NUT, HEX, NYLON INSERT, M10 X 1.5, CZ CLASS 10	2

NOTES:

- TORQUE FASTENER TO 23 N-M (17 FT-LB)
- TORQUE FASTENER TO 45 N-M (33 FT-LB)
- TORQUE FASTENER TO 75-80 N-M (55-60 FT-LB)

THE INFORMATION CONTAINED IN THIS DRAWING IS THE SOLE PROPERTY OF OCTANE FITNESS. ANY REPRODUCTION IN PART OR WHOLE WITHOUT THE WRITTEN PERMISSION OF OCTANE FITNESS IS PROHIBITED.

REV	DESCRIPTION	ECO #	DATE	ENG
-	See Sheet1	-	-	-



ITEM NO.	PART NUMBER	DESCRIPTION	Sht 6/QTY.
1	110658-001	ASSEMBLY, MAIN FRAME COMPONENTS, CLASSIC	1
2	104956-001	ASSY, Q47 PULLEY, ROHS	1
3	100822-001	BELT, DRIVE, 10 RIB, 580J	1
26	900009-001	RING, RETAINING, 25MM	2
27	101821-001	SCREW, M5 X 0.8 X 16.0L SHCS, SS, FLAT WASHER	6
42	110682-001	ASSEMBLY, TRACK COVER, OUTSIDE, LH CLASSIC	1
43	110684-001	ASSEMBLY, TRACK COVER, CENTER CLASSIC	1
44	110680-001	ASSEMBLY, TRACK COVER, OUTSIDE, RH CLASSIC	1

UNLESS OTHERWISE SPECIFIED, DIMENSIONS ARE IN MILLIMETERS. TOLERANCES ARE: FRACTIONS DECIMALS ANGLES + X ±0.5 XX ±0.2 XXX ±0.1		CAD GENERATED DRAWING. DO NOT MANUALLY UPDATE.		OCTANE FITNESS <i>Fuel Your Life</i>	
APPROVALS		DATE		DESCRIPTION	
DRAWN		5/29/2007		XX-XX-XX	
CHECKED		XX-XX-XX		BASE, PRO3700 CLASSIC	
RES'G ENG		XX-XX-XX			
FINISH		XX-XX-XX			
SEE NOTES		XX-XX-XX			
DO NOT SCALE DRAWING		XX-XX-XX			
		SCALE 1:1		DWG. NO. 110700-001	
				REV. K	
				SHEET 6 OF 6	